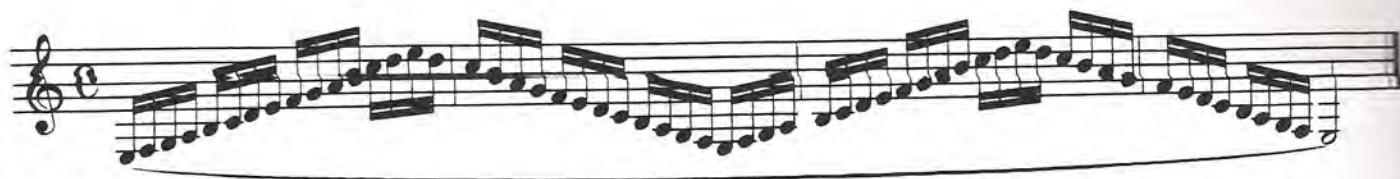


Major and Minor Scales

All major and harmonic minor scales will be played in the non-traditional key order indicated to the right (C, Eb, F#, A, C#, etc.).

Scales will be played on all degrees of each key, starting on either low E or F, and continuing on F, G, A, B, etc. to throat F# or G. Slur up and down twice on each successive note in every key. The use of a metronome in all of these scales is essential. Choose a speed that is a challenge yet does not sacrifice note accuracy and evenness. The harmonic minors will be accomplished after completing the majors. The following scale is the first one in C major:

C	Eb	F#	A
C#	E	G	Bb
D	F	Ab	B



Alternate Fingerings for Altissimo Register Notes

The list of alternate fingerings on the next page is suggested for the top notes only of the major and minor scales when:

1. The traditional fingerings are overly cumbersome, causing difficulties in coordination and/or a slowing of the tempo.
2. The traditional fingerings cause an accent or tone quality change in the top note of the scale because of a one-note register change (e.g., C3-D3-C3).

NOTE: These fingerings are best left to the more advanced players who are already comfortable with the regular fingerings. Young clarinetists who are encountering the altissimo register for the first time should learn only the regular fingerings.

Generally speaking, these alternate fingerings are most often used as trills; as such, while they will sound fine in the 16th note scales, they are not suitable for long tones. They can sound out of tune at slow tempos, and will most often not respond if tongued. While not all of these alternate fingerings may prove to be usable in standard passagework, they do acquaint you with all of the available options. Becoming comfortable with both the regular and alternate fingerings gives you the tools to make intelligent choices to solve future fingering problems.

The twelve major keys will use the following numbered fingerings (in ascending order). Some fingerings may have to be considered enharmonically. All are detailed on the following page.

C	- 1,2	C#	- 5,3,11,7,4,8,9	D	- 6,10
Eb	- 3,1,4,2	E	- 5,6,7,9	F	- 1,2
F#	- 5,3,6,4,7,8,9	G	- 1,10	Ab	- 3,11,7,4,2
A	- 5,6,9	Bb	- 1,4,2	B	- 5,3,6,7,8,9

Alternate Scale Fingerings

1  2  3  4 



5  6  7  8 



9  10  11 

